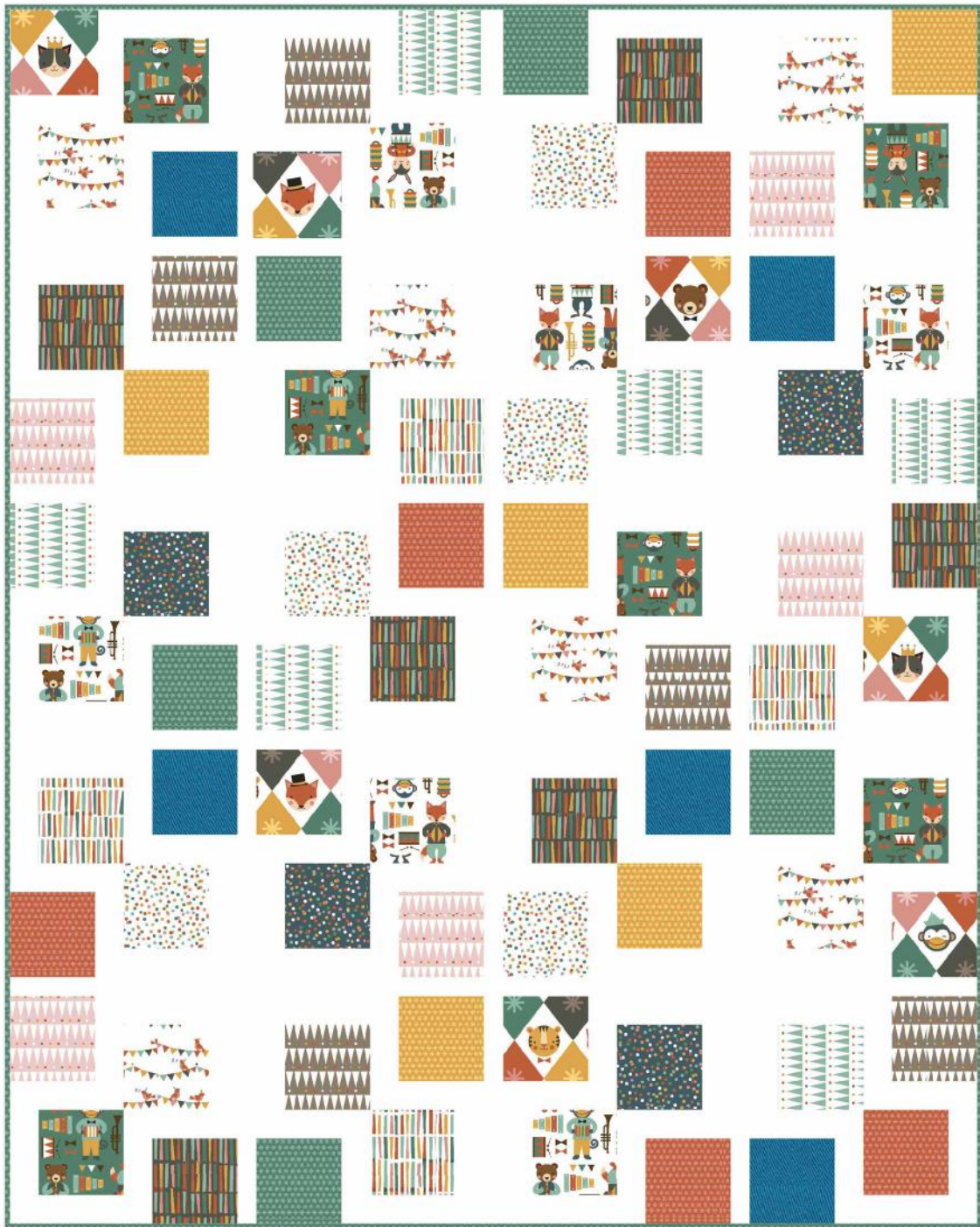


# Block Party

Designed by Stacey Day

Featuring Petit Collage's Party Animals Collection

SIZE: 51" x 64"



**PLEASE NOTE:** QUILT IMAGE SHOWN IS A DIGITAL REPRESENTATION, FABRIC LOOK MAY VARY ON YOUR PROJECT.  
VISIT OUR [FREE PROJECT SECTION](#) ONLINE FOR ANY PATTERN UPDATES BEFORE STARTING QUILT PROJECT.



WINDHAM FABRICS



# Block Party

Page 2



41507-X Multi



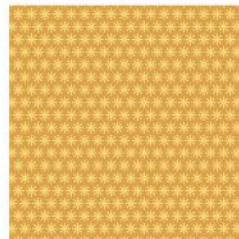
41508-1 Green



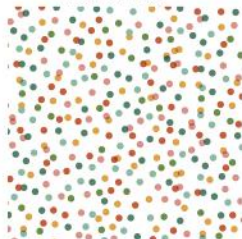
41508-2 White



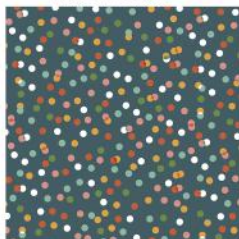
41509-X Multi



41513-7 Yellow



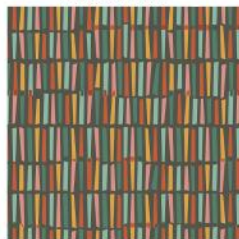
41510-2 White



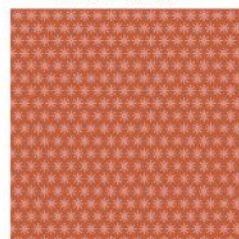
41510-3 Teal



41511-2 White



41511-4 Charcoal



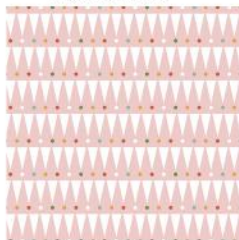
41513-8 Red



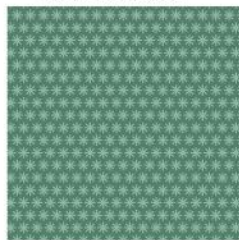
41512-1 Green



41512-5 Taupe



41512-6 Pink



41513-1 Green



40171-35 AQUA-BLUE

## Fabric Requirements

2 yards White Solid \*Not Pictured\*

1/4 yard 41507-X Multi for blocks

1/4 yard 41508-1 Green for blocks

1/4 yard 41508-2 White for blocks

4 yards 41509-X Multi for blocks and backing

1/4 yard 41510-2 White for blocks

1/4 yard 41510-3 Teal for blocks

1/4 yard 41511-2 White for blocks

61"x 74" piece of batting

1/4 yard 41511-4 Charcoal for blocks

1/4 yard 41512-1 Green for blocks

1/4 yard 41512-5 Taupe for blocks

1/4 yard 41512-6 Pink for blocks

2/3 yard 41513-1 Green for blocks and binding

1/4 yard 41513-7 Yellow for blocks

1/4 yard 41513-8 Red for blocks

1/4 yard 40171-35 Aqua-Blue for blocks

# Block Party

Page 3

## Cutting

From the White Solid, cut:

- (80) rectangles, 2"x 5"
- (80) rectangles 2"x 6 1/2"
- (15) strips, 1 1/2"x 12 1/2"
- (4) strips, 1 1/2"x 40 1/2"
- (4) strips, 1 1/2"x 11 1/2"

From the 41507-X Multi, cut:

- (6) squares, 5"

From the 41509-X Multi, cut:

- (5) squares, 5"
- (2) rectangles, 61"x WOF for backing

From the 41513-1 Green, cut:

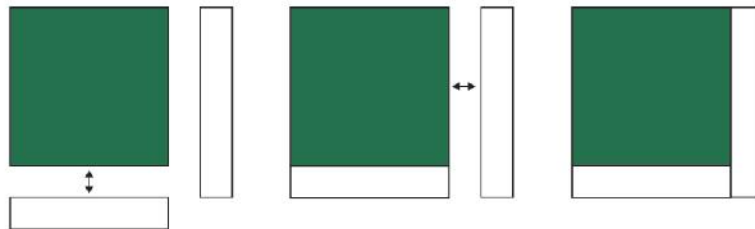
- (5) squares, 5"
- (7) strips, 2 1/4"x WOF

From EACH of the remaining prints, cut:

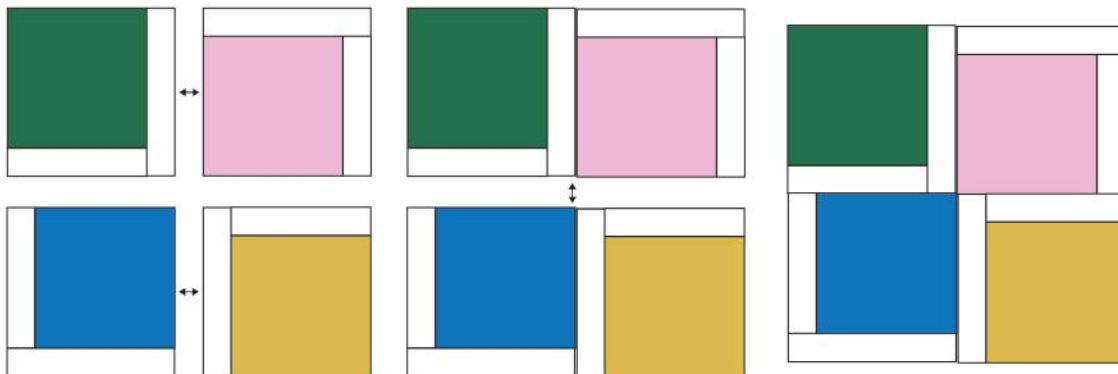
- (5) squares, 5"

## Instructions

1. Take the 5" squares from each print and sew a White 2"x 5" rectangle to one side. Press towards the White, and then sew a 2"x 6 1/2" rectangle to the adjacent side as shown to make a Small Block. Press towards the white again. Trim and square the Small Blocks to 6 1/2".



2. Sew (4) of the 6 1/2" Small Blocks together as shown into a Large Block, referring to the layout diagram for the fabric placement for each Large Block. Press the seams towards the White, trim and square to 12 1/2". Repeat to make (25) Large Blocks.



# *Block Party*

## Page 4

3. Sew a 1 1/2"x 11 1/2" strip to the end of a 1 1/2"x 40 1/2" strip, to make 4 long sashes 1 1/2"x 51 1/2".

4. Sew the Large Blocks together into rows, referring to the layout diagram for block placement and orientation, with a White 1 1/2"x 12 1/2" rectangle in between each block. Press towards the White, and then sew the rows together with a 1 1/2"x 51 1/2" sash in between each row. Press towards the sashes, and then press the finished top well.

5. Piece the 41509-X Multi 61"x WOF rectangles together to make the backing. Layer the quilt top with batting and backing; baste. Quilt as desired. Using the 41513-1 Green 2 1/4" wide binding strips, sew around the quilt top. Turn the binding to the back and secure in place by hand or machine. Label and enjoy!



# Block Party

Page 5

